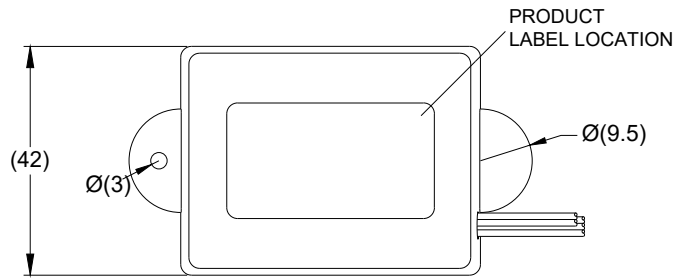
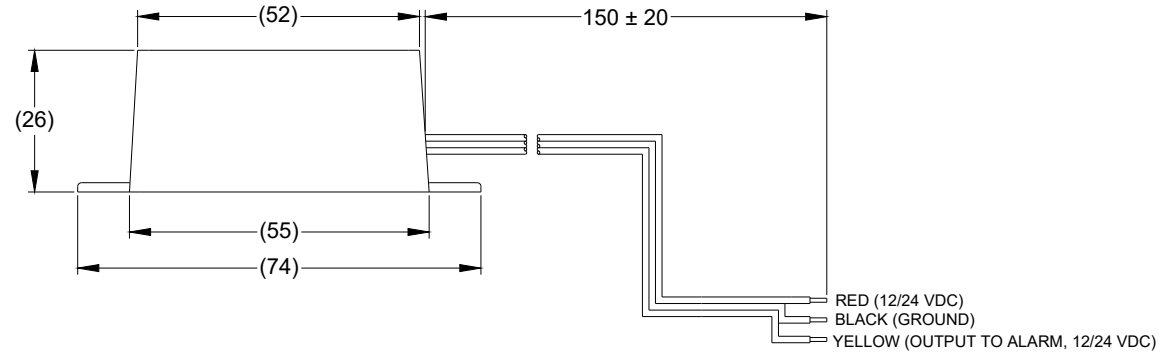


ITEM	PART NO	QTY	MODEL / DESCRIPTION
①	(7548)	1	NS-3-E / ECU ONLY
②	-	1	NS-3-IG / INSTALLATION GUIDE (NOT SHOWN)
③	(7581)	1	25x55 NSDS-LBL / DASH STICKER (NOT SHOWN)

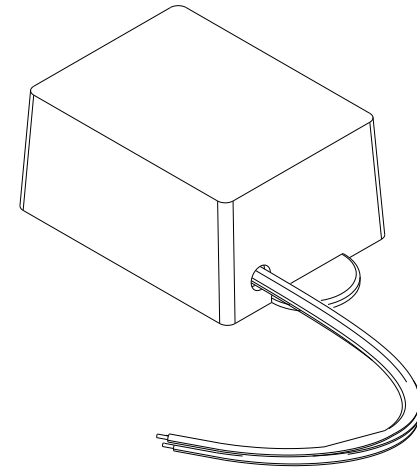
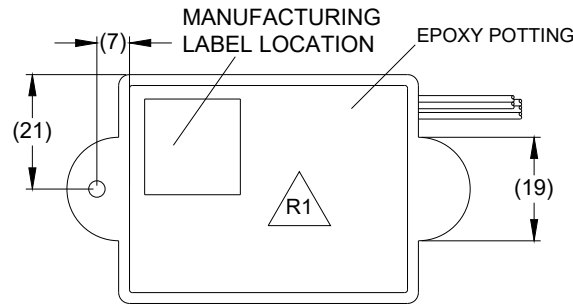
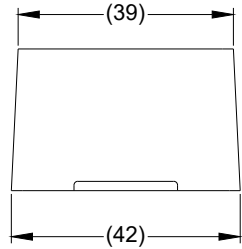
Revision Notes				
R1 - MANUFACTURING LABEL DETAILS ADDED, FRAME UPDATED, KIT TABLE ADDED, NOTES REVISED, AS PER P1648				
APA: A. WRIGHT	Drawn: B. STROHMER	Checked: E. MATHEW	Approved: D. FOALE	Date: 28/08/25



R1



RED (12/24 VDC)
BLACK (GROUND)
YELLOW (OUTPUT TO ALARM, 12/24 VDC)

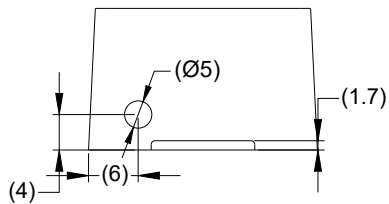


SPECIFICATION

RATED VOLTAGE: 12 AND 24 VOLTS DIRECT CURRENT (WORKING VOLTAGE RANGE 10 THRU 30 VOLTS)
RATED CURRENT: 300 MILLIAMPERES OR LESS
MAX CURRENT HANDLING: 10 AMPERES
CABLE THICKNESS: POWER CABLES 16/0.2MM

OPERATION

WHEN THE VEHICLE IS ENGAGED IN REVERSE TWICE WITHIN 3 SECONDS
THE ALARM OUTPUT WILL BE MUTED UNTIL THE VEHICLE IS TAKEN OUT OF REVERSE.



NOTES:

- DIMENSIONS IN MM
- POTTING SHOULD FULLY ENCAPSULATE THE PCB ALTHOUGH THE RELAY CAN PROTRUDE
- HOLE LOCATIONS ON THE HOUSING ARE THE RESPONSIBILITY OF THE ASSEMBLY PLANT AND SHOULD ADHERE TO DRAWING "GPL2-DRILL ISSUE 1"
- FOR LABEL AND PACKAGING DETAILS REFER TO MASTER BOM.
- ANY CUSTOMER MODIFICATION OF THIS PRODUCT CAUSING SUBSEQUENT FAILURE IS NOT A LIABILITY OF BRIGADE ELECTRONICS PLC.

PROPRIETARY NOTICE

THIS DESIGN AND TECHNICAL INFORMATION APPEARING ON THIS DRAWING IS THE PROPERTY OF BRIGADE ELECTRONICS, AND IS DISCLOSED IN CONFIDENCE. IT IS NOT TO BE COPIED, REPRODUCED, REVEALED TO OR EXPROPRIATED BY OTHERS, EITHER IN WHOLE OR IN PART WITHOUT THE EXPRESS WRITTEN CONSENT OF BRIGADE ELECTRONICS.

R1

R1

Sheet 1 of 1	Assembly Pl Approval A. HEEDLE	Approved by D. KERAI	Checked by L. BRAR	Drawn by M. BUTLER
Customer Approval -	Angle of Projection Third Angle	Units mm	Scale N/A	Released 03/02/12
Status RELEASED		Assembly Ref A1092D		
Part No 0974		NS-3 BE-001914-01-12		

Brigade
brigade-electronics.com